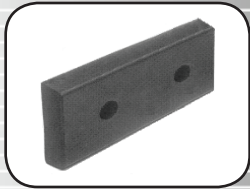
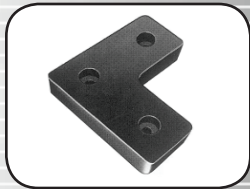


# Bumpers

## MOLDED, LAMINATED & STEEL BUMPER SPECIFICATION



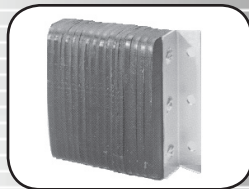
Molded 018 Bumper



Molded "L" Bumper



Molded "T" Bumper



Laminated Bumper



Steel Face Bumper

Bumpers offer important protection for your entire dock investment. They provide maximum protection against vehicle damage to the dock leveler, building walls, restraint and seals/shelters. A wide variety of styles to choose from: vertical and horizontal in both steel-faced, laminated and molded.

### Design Highlights

- Provides maximum cushioning protection against vehicle damage to the dock and building
- Constructed to last, and proven years of protection
- Reduces costly concrete repair to buildings from truck impact
- Low maintenance
- Numerous models available

### Project Information

Job Name \_\_\_\_\_

Address \_\_\_\_\_

General Contractor \_\_\_\_\_

Distributor \_\_\_\_\_

Model \_\_\_\_\_

Quantity \_\_\_\_\_

### Certified For Construction

By \_\_\_\_\_

Company \_\_\_\_\_

Address \_\_\_\_\_

Date \_\_\_\_\_

# Bumpers

## MOLDED, LAMINATED & STEEL BUMPER SPECIFICATION

### Sample Bumper Offering

#### Molded Bumpers

Model	Thickness	Height	Width	Est. Weight
L	4"	18"	18"	30 lbs.
M-18	4"	10"	18"	23 lbs.
T	3"	22"	22"	30 lbs.

#### Laminated Bumpers

##### Horizontal Bumpers

Model	Thickness	Height	Width	Est. Weight
Width is measured from center of bolt hole to center of bolt hole.				
410-14	4.5"	10"	14"	26 lbs.
410-24	4.5"	10"	24"	45 lbs.
412-14	4.5"	12"	14"	33 lbs.
412-24	4.5"	12"	24"	52 lbs.
610-14	6"	10"	14"	32 lbs.
610-24	6"	10"	24"	55 lbs.
612-14	6"	12"	14"	40 lbs.
612-24	6"	12"	24"	70 lbs.
910-14*	9"	10"	14"	65 lbs.
910-24*	9"	10"	24"	100 lbs.

\* Extra thick bumpers are not warranted.

##### Vertical Bumpers

Width is measured from outside edge of angle to outside edge of opposite angle.

V420-14	4.5"	20"	14"	45 lbs.
V424-14	4.5"	24"	14"	51 lbs.
V620-14	6"	20"	14"	55 lbs.
V624-14	6"	24"	14"	63 lbs.

#### Steel Face Bumpers

##### Horizontal Bumpers

Model	Thickness	Height	Width	Est. Weight
Width is measured from center of bolt hole to center of bolt hole.				
410-14SF*	5.25"	10"	14"	50 lbs.
410-24SF*	5.25"	10"	24"	75 lbs.

##### Vertical Bumpers

Width is measured from outside edge of angle to outside edge of opposite angle.

V420-14SF	5.25"	20"	13"	75 lbs.
V424-14SF	5.25"	24"	13"	88 lbs.
V620-14SF	6.75"	20"	13"	52 lbs.
V624-14SF	6.75"	24"	13"	100 lbs.

\*Steel Face Thin available where 4" - 4 1/2" projection must be maintained.

#### DOCK DEFENDER™ (steel wrapped bumper)

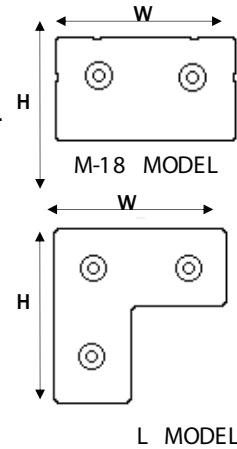
V424-14	5.25"	24"	14"	80 lbs.
V624-14	6.75"	24"	14"	100 lbs.

\*Ship Class 55

\*\*\*Left and Right bumpers are separate

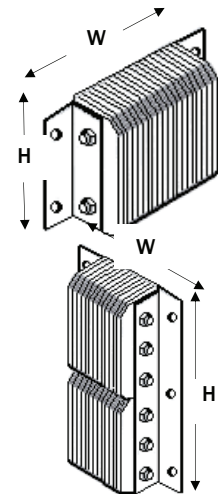
#### MOLDED BUMBERS

- Molded in one piece of all new nylon and new polyester reinforced rubber.
- Bumper to have a durometer reading of 80 plus or minus 5, tensile strength of 950-1050 PSI, and an impact recovery of 95%.
- All models have pre-drilled, countersunk mounting holes that are drilled to accept 3/4" anchor bolts.



#### LAMINATED BUMBERS

- Resilient rubber material of bumpers shall be rubberized-fabric truck tires cut to uniform size pads and punched to receive 3/4" supporting rods.
- All bumpers must be 4 1/2" thick and closed with two 3" x 3" x 1/4" structural angles under approximately 1,500 lbs of pressure.
- The anchor leg of angle extends a minimum of 3" beyond the rubber surface at either end and contains two or three 13/16" anchor bolt holes as required.



#### STEEL FACE BUMBERS

- Resilient rubber material of bumpers cut to uniform size pads 4 1/2" thick with overall projection of 5 1/4". Punched to receive 3/4" supporting rods.
- Bumper to have 3/8" steel face plate equal to the rubber surface dimensions.

